

NOTE

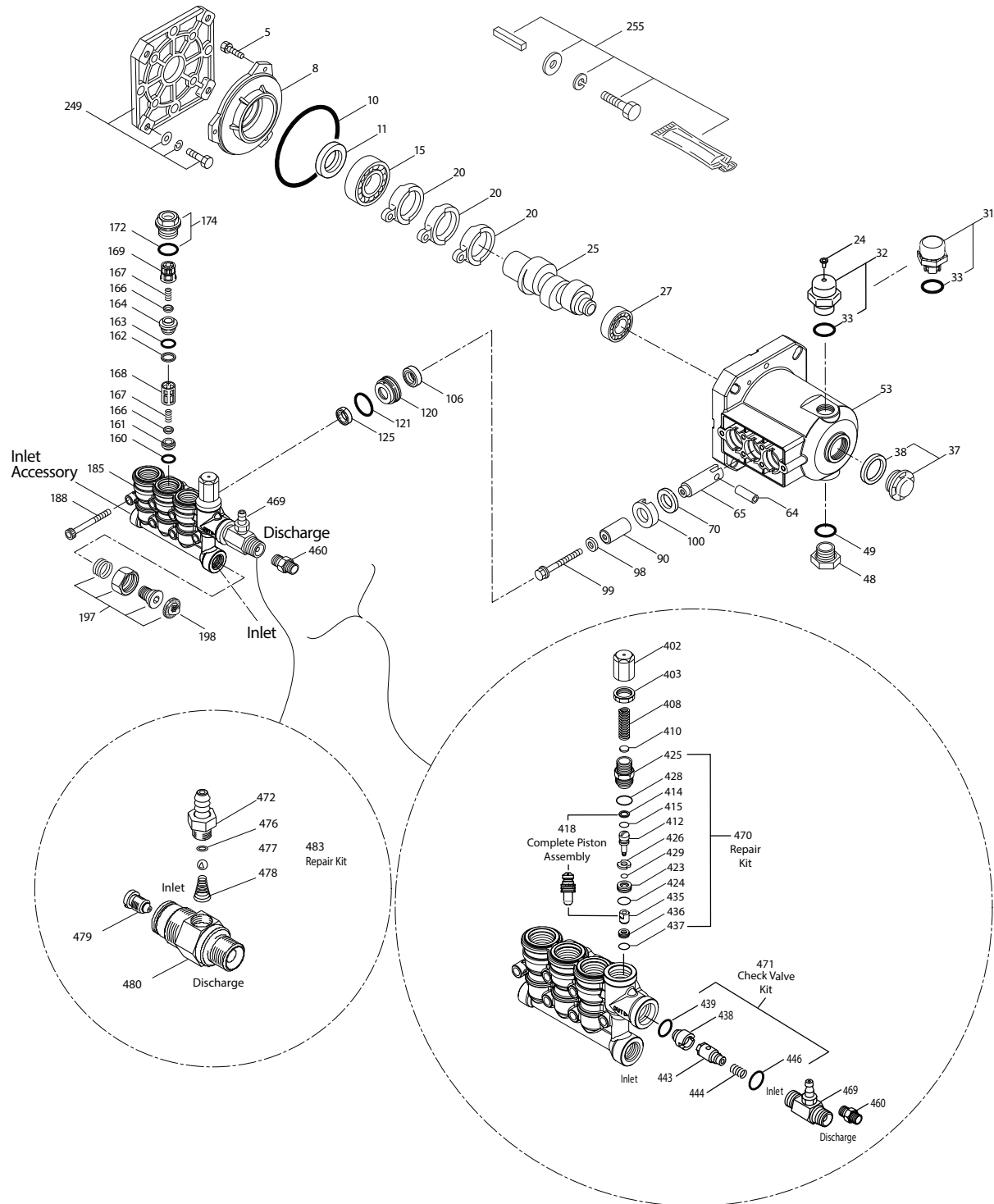
- FRAME ASSEMBLY: (1, 38, 41, 51, 52, 54, 58, 75)
- ENGINE/MOUNT ASSEMBLY: (55, 59, 65, 47, 49)
- PUMP ASSEMBLY: (23, 43, 46, 50, 57, 62, 63)
- ALTERNATOR/MOUNT ASSEMBLY: (57, 60, 64)
- BELT GUARD ASSEMBLY: (51, 54, 57, 61)
- COIL ASSEMBLY ASSEMBLY: (10, 27, 42, 57, 65)
- BURNER ASSEMBLY: (4, 5, 7, 9, 65, 69)
- FUEL TANK ASSEMBLY: (57, 66, 73)
- HEAT SHIELD ASSEMBLY: (36, 38, 40)
- BATTERY HOLD DOWN ASSEMBLY: (65, 74, 80)

	NAME	DATE
DRAWN	M.K.	11/08/2016
CHECKED	B.D.	11/08/2016
ENG APPR.	A.G.	11/08/2016
MFG APPR.	-	-
Q.A. APPR.	-	-
SERVICE APPR.	D.H.	11/08/2016

FNA-GROUP		
1265 INDUSTRIAL STREET, DECATUR, AR 72722		
TITLE:		
KING BRUTE 65100		
SIZE	DWG. NO.	REV.
B	65100	A
SCALE: N/A	ECN# DC16-0311	SHEET 1 OF 1

PROPRIETARY AND CONFIDENTIAL
 THE INFORMATION CONTAINED IN THIS DRAWING IS THE SOLE PROPERTY OF FNA-GROUP. ANY REPRODUCTION IN PART OR AS A WHOLE WITHOUT THE WRITTEN PERMISSION OF FNA-GROUP IS PROHIBITED.

4DNX25GSI_E EXPLODED VIEW



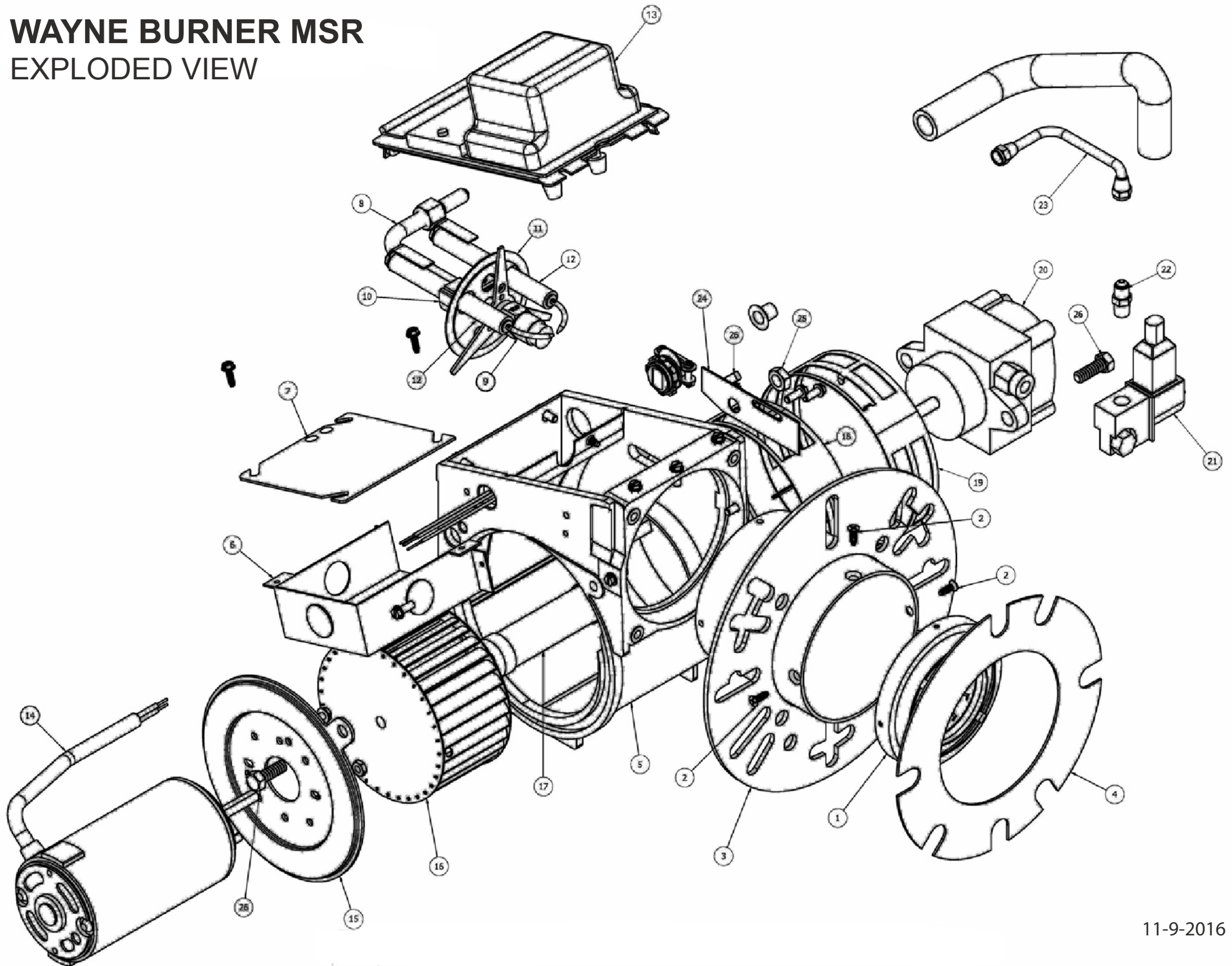
Parts List

ITEM	PART	DESCRIPTION	QTY.	ITEM	PART	DESCRIPTION	QTY.
5	7103819	SCREW HH SEMS (M6 X14)	3	412	N/A	STEM, PISTON	1
8	7103820	COVER, BEARING	1	414	N/A	BACK-UP RING, PISTON STEM	1
10	7102614	O-RING, BEARING COVER 70D	1	415	N/A	O-RING, PISTON STEM - 70D	1
11	7102813	SEAL, OIL 70D	1	423	N/A	RETAINER, VALVE	1
15	7102624	BEARING, BALL INNER	1	424	N/A	O-RING, VALVE RETAINER (OUTER) - 70D	1
20	7103824	ROD, CONNECTING	3	425	N/A	RETAINER, PISTON	1
24	7106430	PLUG, OIL CAP	1	426	N/A	WASHER	1
25	7103826	CRANKSHAFT, 3450 RPM, 3/4" 6.8MM STROKE	1	428	N/A	O-RING, PISTON RETAINER - 80D	1
25	7105354	CRANKSHAFT, 3450 RPM, 3/4" 6.3MM STROKE	1	429	N/A	O-RING, VALVE RETAINER (INNER) - 80D	1
27	7103828	BEARING, BALL INNER	1	435	N/A	VALVE	1
32	7102604	CAP, OIL FILLER WITH O-RING	1	436	7103846	SEAT	1
33	7102617	O-RING, OIL FILL CAP	1	437	N/A	O-RING SEAT - 70D	1
37	7103056	GAUGE, OIL BUBBLE WITH GASKET	1	438	7101617	SEAT	1
38	7102970	GASKET, FLATOIL GAUGE	1	439	N/A	O-RING, CHECK VALVE SEAT 70D	1
48	7102787	PLUG, DRAIN	1	443	N/A	VALVE, CHECK	1
49	7102617	O-RING, DRAIN PLUG	1	444	7103048	SPRING, CHECK VALVE	1
53	7106425	CRANKCASE	1	446	7103851	O-RING BODY - 80D	1
64	7103830	PIN, CROSSHEAD	3	468	7103541	KIT, O-RING	1
65	7103831	ROD, PLUNGER	3	469	7101616	INJECTOR, FIXED CHEMICAL	1
70	7102804	SEAL, OIL CRANKCASE. 70D	3	470	7106435	KIT, REPAIR (412, 414, 415, 423-426, 428, 429, 435-437)	1
90	7103524	PLUNGER CERAMIC	3	471	7106436	KIT, REPAIR (438, 439, 443, 444, 446)	1
98	7101703	WASHER, SEAL	3				
99	7103833	RETAINER, PLUNGER (M6 X 35)	3				
100	7102925	RETAINER SEAL	3				
106	N/A	SEAL, LPS WITH S-Spq	3				
120	7106427	CASE, SEAL	3				
121	7102610	O-RING, SEAL CASE	3				
125	7106428	SEAL, HPS	3				
160	N/A	O-RING, INLET SEAT	3				
161	N/A	SEAT, INLET	3				
162	7102945	BACK-UP-RING, DISCHARGE SEAT	3				
163	7102946	O-RING, DISCHARGE SEAT, 70D	3				
164	N/A	SEAT, DISCHARGE	3				
166	N/A	VALVE	6				
167	7102923	SPRING	6				
168	7102812	RETAINER, SPRING, INLET	3				
169	N/A	RETAINER, SPRING, DISCHARGE	3				
172	N/A	O-RING, VALVE PLUG - 90D	3				
174	7106429	PLUG, VALVE WITH O-RING	3				
185	7106430	HEAD, MANIFOLD WITH INTEGRAL REGULATORY BODY	1				
188	7106431	SCREW	6				
197	7103839	ASSY, GH, 3/8"	1				
198	7000123	INLET SCREEN FILTER W/GASKET	1				
249	7103840	ASSY, ADAPTOR MOUNT	1				
255	7103841	ASSY, BOLT MOUNT	1				
283	7106432	KIT, OIL DRAIN	1				
300	7106433	KIT, SEAL (98, 106, 121, 125)	1				
310	7106434	KIT, VALVE (160-164, 166-169, 172)	1				
402	7103842	CAP, ADJUSTING	1				
403	7103843	NUT, LOCK (M18 X 1)	1				
408	7103544	SPRING, PRESSURE	1				
410	7103845	RETAINER, SPRING	1				

4DNX25GSI

WAYNE BURNER MSR

EXPLODED VIEW



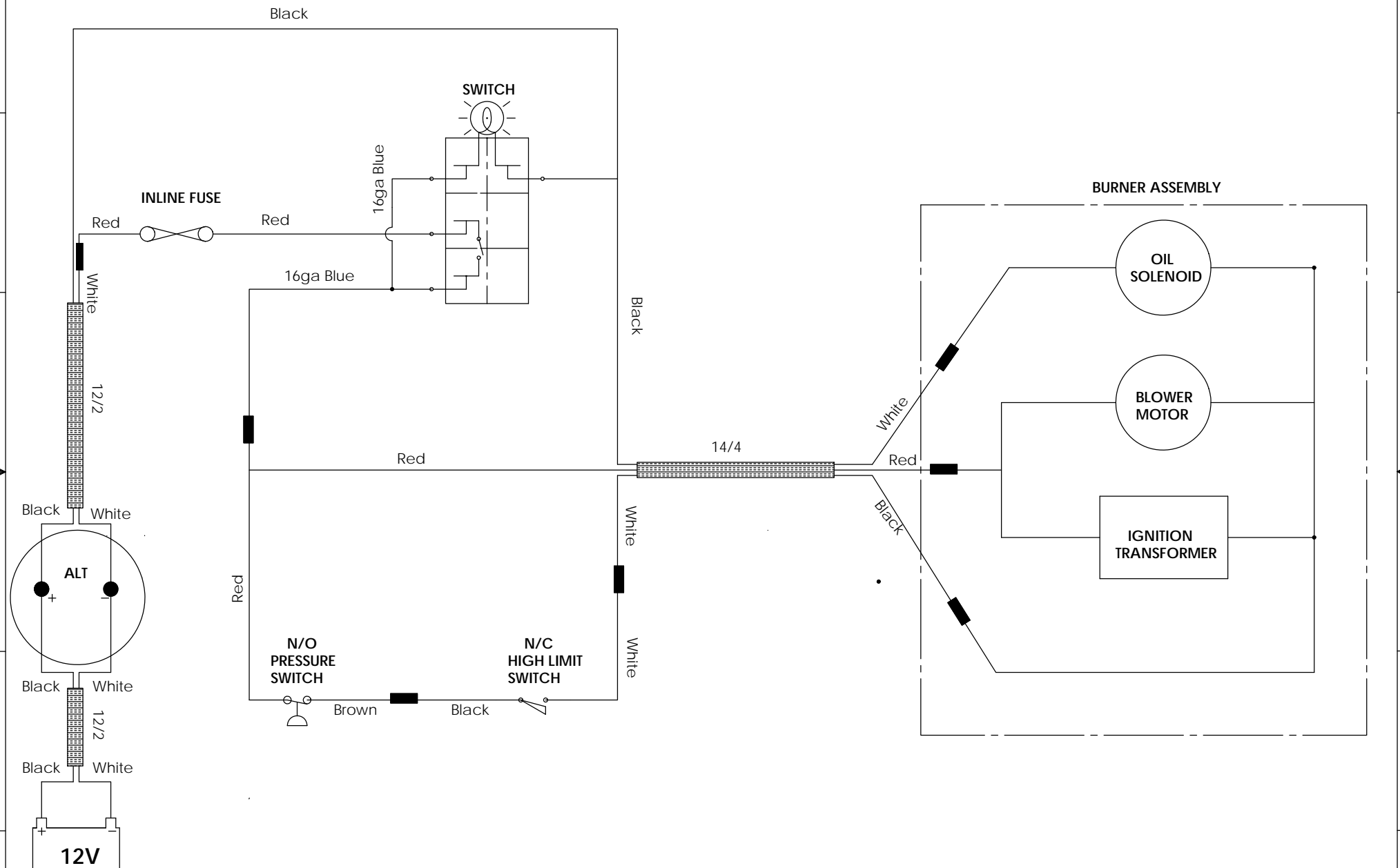
PARTS LIST

ITEM	PART	DESCRIPTION	QTY.
1	7102735	CONE, AIR #3A	1
2	N/A	SCREW-AIR CONE MOUNTING	3
3	N/A	TUBE, FLANGE ASSEMBLY	1
4	7101781	GASKET, FLANGE-STD LARGE	1
5	N/A	HOUSING ASM-M MACHD/PAINTED	1
6	N/A	J-BOX, 3" X 4"	1
7	N/A	COVER, J-BOX	1
8	7102732	GUN ASM-EHS/*1 1/4"BB	1
9	N/A	ADAPTOR, NOZZLE-W/LARGE SUPPORT	1
10	N/A	ELECTRODE SUPPORT KIT W/STABILIZER	1
11	N/A	DISC, STATIC 3" DIA-SOLID	1
12	7101711	KIT, ELECTRODE ASM PAIR	1
13		IGNITOR	1
	7101922	12V DC	
	7101292	120V AC	
	7106739	230V AC	
14		MOTOR, BLOWER/OIL PUMP	1
	7105399	12V DC	
	7106410	120V AC	
	7107097	230V AC	
15	N/A	SIDE PLATE, HOUSING-12VDC MOTOR	1
16	7100331	FAN-2.44"W X 4.53"D M 5/16" BORE	1
17		MOTOR DRIVE COUPLING	1
	7101521	12V DC	
	7101521	120V AC	
	7101521	230V AC	
18	N/A	BAND, AIR INNER-MOD M	1
19	N/A	BAND, AIR OUTER 8-HOLE MOD-M	1
20	7101049	PUMP, SUNTEC A2VA7116 3GPH 1STG	1
21		OIL VALVE	1
	7101164	12V DC	
	7101349	120V AC	
	7101350	230V AC	
22	N/A	CONNECTOR, MALE PUMP 3/16" X 1/8" IPT	1
23	N/A	OIL LINE ASSEMBLY-6"	1
24	N/A	PLATE, HOUSING SLOT COVER	1
25	N/A	NUT, GUN LOCK-HEX 3/8-24 CRZC	1
26	N/A	SCREW-MOTOR, PUMP, AIR BAND	5

WAYNE - MSR BURNER

12V

REV.	DESCRIPTION	REVISIONS	ECN	APPROVED	DATE
A	DRAWING RELEASE		DC16-0311	11/08/2016	11/8/2016



THIRD ANGLE PROJECTION		NAME	DATE	FNA-GROUP 1265 INDUSTRIAL STREET, DECATUR, AR 72722 TITLE: KING BRUTE WIRING DIAGRAM		
UNLESS OTHERWISE SPECIFIED:		DRAWN	M.K.			11/08/2016
DIMENSIONS ARE IN INCHES (MM)		CHECKED	B.D.			11/08/2016
TOLERANCES:		ENG APPR	A.G.			11/08/2016
.XX +.01 [X ±.25]		Q.A. APPR	-			-
.XX +.03 [X ±.76]		MFG APPR	-	-		
.XXX +.010 [XX ±0.25]						
FRACTIONAL: +1/32 ±0.79						
ANGULAR: ±1° REVD: ±1°						
ALL MACHINED SURFACES: √25						
INTERPRET GEOMETRIC TOLERANCING PER ASME Y14.5M-1994						
NEXT ASSY	USED ON	PROPRIETARY AND CONFIDENTIAL THE INFORMATION CONTAINED IN THIS DRAWING IS THE SOLE PROPERTY OF FNA-GROUP. ANY REPRODUCTION IN PART OR AS A WHOLE WITHOUT THE WRITTEN PERMISSION OF FNA-GROUP IS PROHIBITED.				
APPLICATION		DO NOT SCALE DRAWING		SIZE C	DWG. NO. 65100 KING BRUTE	REV A
		WEIGHT:		SCALE: 1:4	SHEET 1 OF 1	

Version